

**PETROLEUM PORTS AUTHORITY**

**MARINE NOTICE No. 20/17**

**Station/Port.:** DAS/ZIRKU/MUBARRAZ  
**Ref No:** PPA/DAS/MN/20/17

**Date:** 14/06/2017

**Priority:** ☒ Urgent  
☐ Normal

**SUBJECT :** UMM LULU Full Field development Project - ROV Survey along 20" MOL from Zirku Island to ULRP

**DATE :** With Effect from 14<sup>th</sup> June 2017

**LOCATION/POSITION:** As per the attached Drawing

**Note:**

**DETAILS / INFORMATION**

Please be advised that, DP2 Vessel "QMS Paraiso" commences as laid ROV survey of 20" MOL from Zirku to ULRP. A Remote operated vessel (ROV) will be deployed from DP2 vessel for the underwater survey .

All vessels and crafts are requested to navigate with caution while transiting near the barge work zone.

**CAUTION:** When in vicinity of the working area, marines are reminded to:

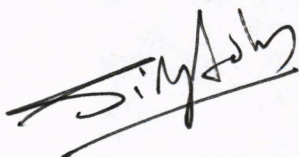
- a) Maintain a proper lookout.
- b) Proceed at a safe speed and navigate with caution.
- c) Keep well clear and pass at minimum of 500 m from the vessel.
- d) Maintain a listening watch on VHF Channel 12/23 (Das Port Control/VTIS)
- e) Mariners can communicate with the DP2 Vessel on VHF Channel 12/16

**For Petroleum Ports Authority**

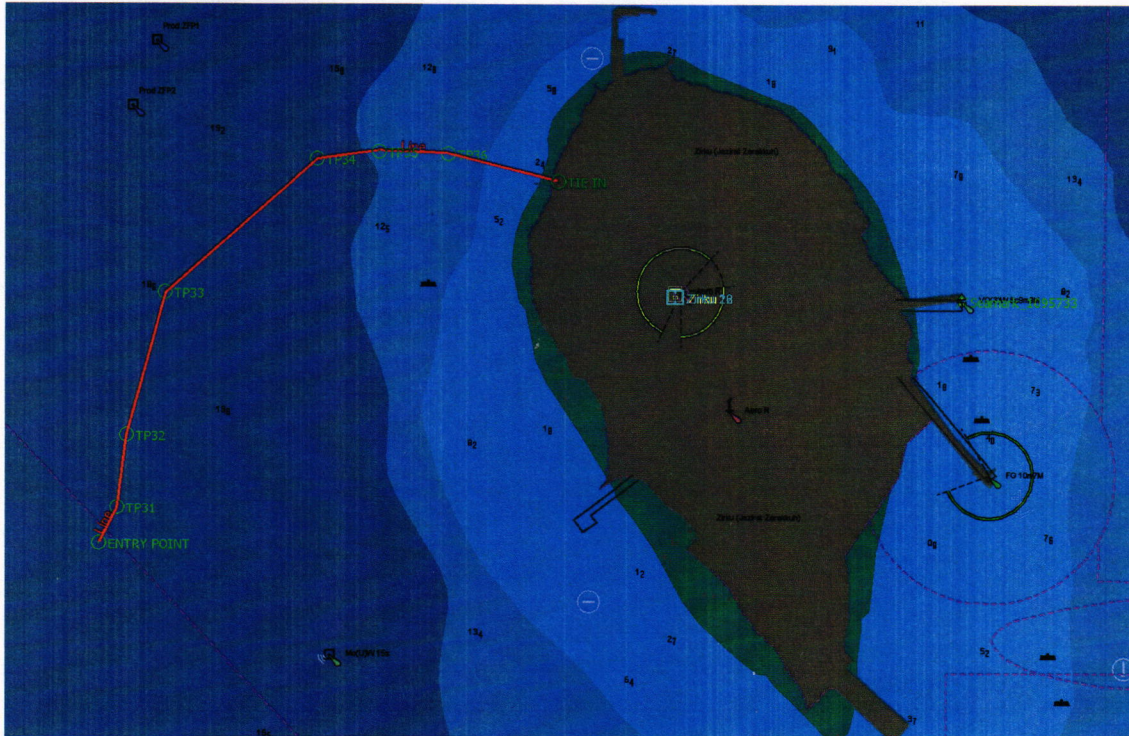
**Name :** Capt. Siby John

**Title :** Harbour Master

**Signature:**







Pt	WGS LAT	WGS LONG
Entry Pt.	24°52.08201 N	53°1.639394 E
TP 31	24°52.22433 N	53°1.711525 E
TP 32	24°52.51108 N	53°1.754894 E
TP 33	24°53.07317 N	53°1.924430 E
TP 34	24°53.60345 N	53°2.587673 E
TP 35	24°53.63673 N	53°2.852154 E
TP 36	24°53.62277 N	53°3.151550 E
Tie-in	24°53.51465 N	53°3.637650 E

